



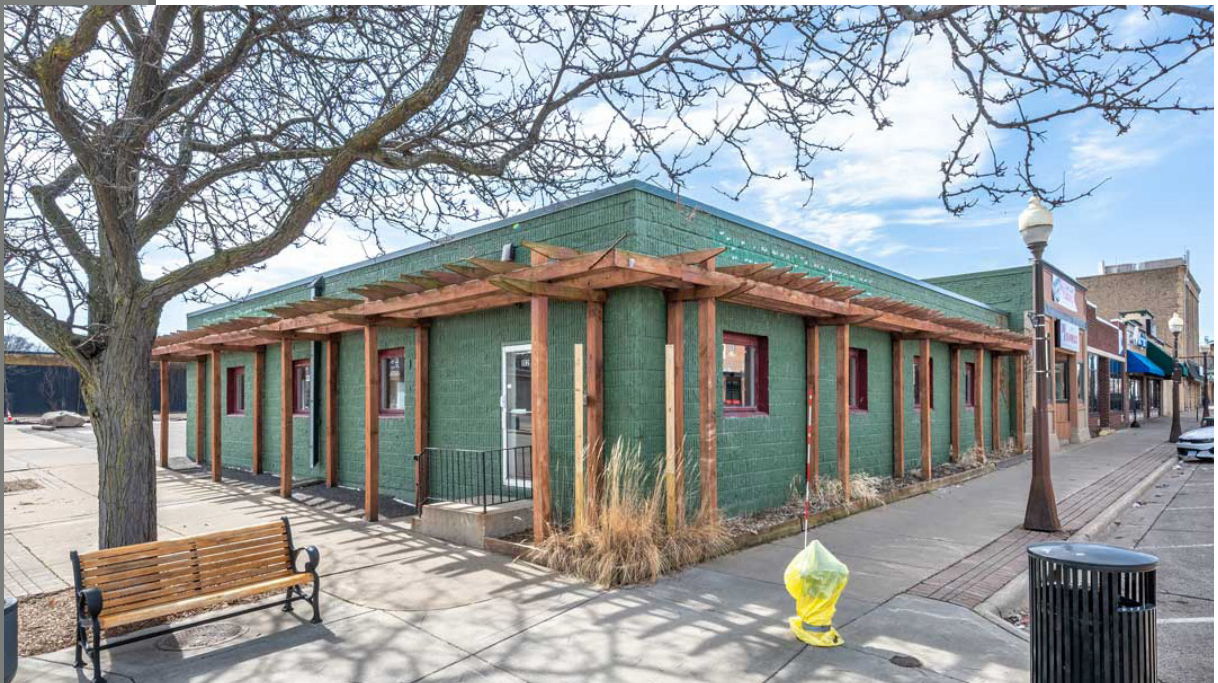
PARTNERS

FOR SALE

112 Sommerville St S | Shakopee, MN

- Approx 7,000 SF Total (3,800 SF Main Level)
- Retail Building in Heart of Downtown Shakopee
- Corner Lot in Main Business District
- 9 Dedicated Parking Spaces
- Growing Community with Strong Demographics
- Unmatched Signage Opportunity

- **Price: \$875,000**
- Tax: \$12,154



Eric Riemer
Broker
Phone: 612-730-4631
eric@creminnesota.com

Sam Eicher
Broker
Phone: 763-228-1265
sam@creminnesota.com

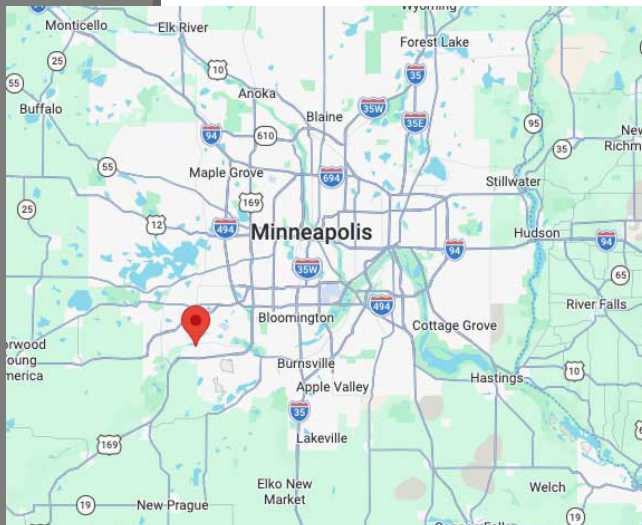
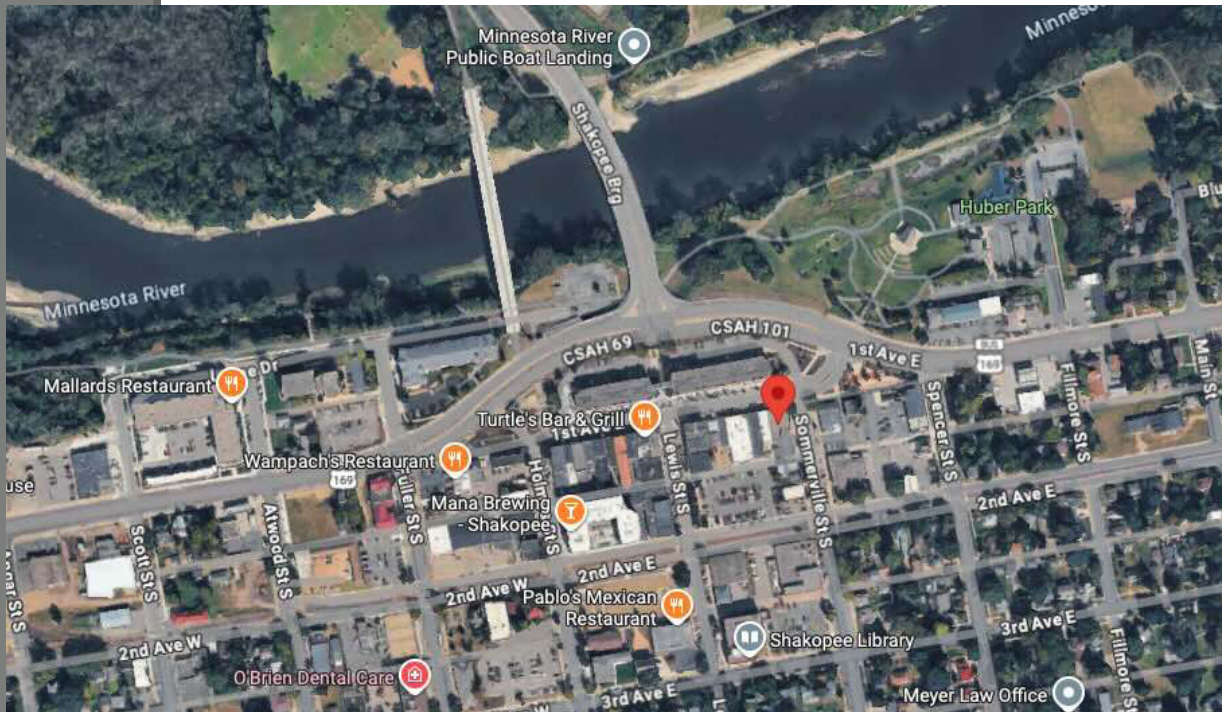
We obtained the information above from sources we believe to be reliable. However, we have not verified its accuracy and make no guarantee, warranty or representation about it. It is submitted subject to the possibility of errors, omissions, change of price, rental or other conditions, prior to sale, lease or financing, or withdrawal without notice. We include projections, opinions, as-sumptions or estimates for example only, and they may not represent current or future performance of the property. You and your tax and legal advisors should conduct your own investigation of the property.

CRE

PARTNERS

FOR SALE

112 Sommerville St S | Shakopee, MN



Eric Riemer
CRE Partners
Broker
612-730-4631
eric@creminnesota.com

Sam Eicher
CRE Partners
Broker
763-228-1265
sam@creminnesota.com

CRETM

PARTNERS

FLOOR PLAN

Main Floor





PARTNERS

FLOOR PLAN

Lower Level





PROPERTY PHOTOS

PARTNERS

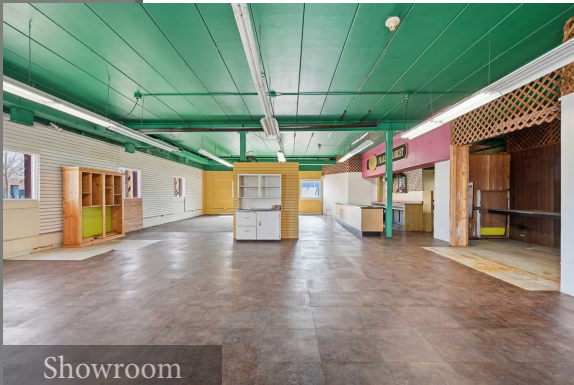
Website: [112 Sommerville St, Shakopee](http://112SommervilleSt.Shakopee)



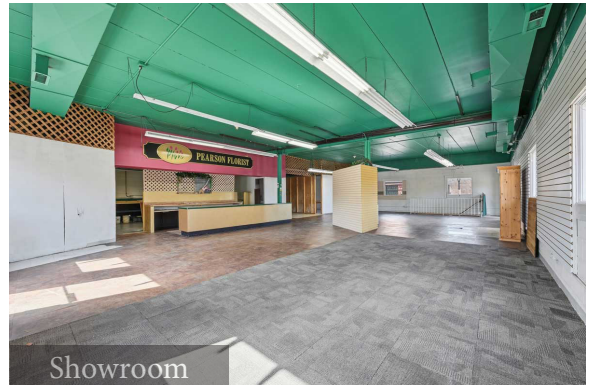
Front



Parking



Showroom



Showroom



Basement



Loading

CRE™

PARTNERS

3D Tour

