



# FOR **SUBLEASE**

**119 4th St N** | Minneapolis, MN

- Approx 8,643 SF Office
  - Brick & Timber Creative Space
  - Mix of Open Area & Private Offices
  - Water & Break Area
  - Easy Access to Parking Ramps & Light Rail
  - Great Location Next to Target Field
- 
- Suite 300
  - Sublease Through Dec 2022
  - Lease Rate: \$Negotiable



## Eric Riemer

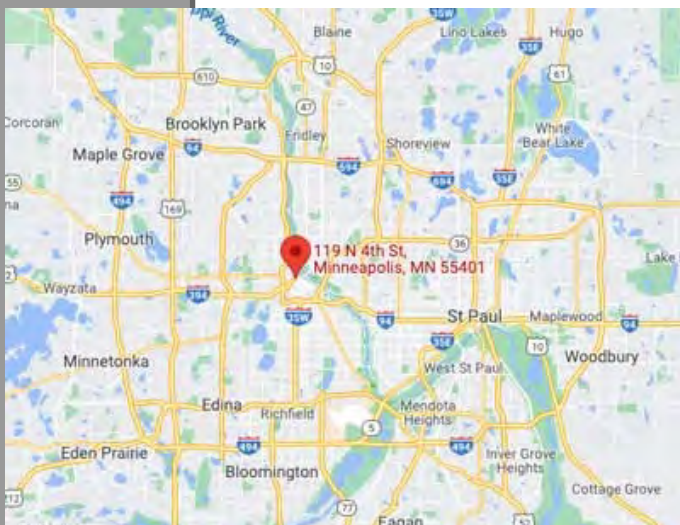
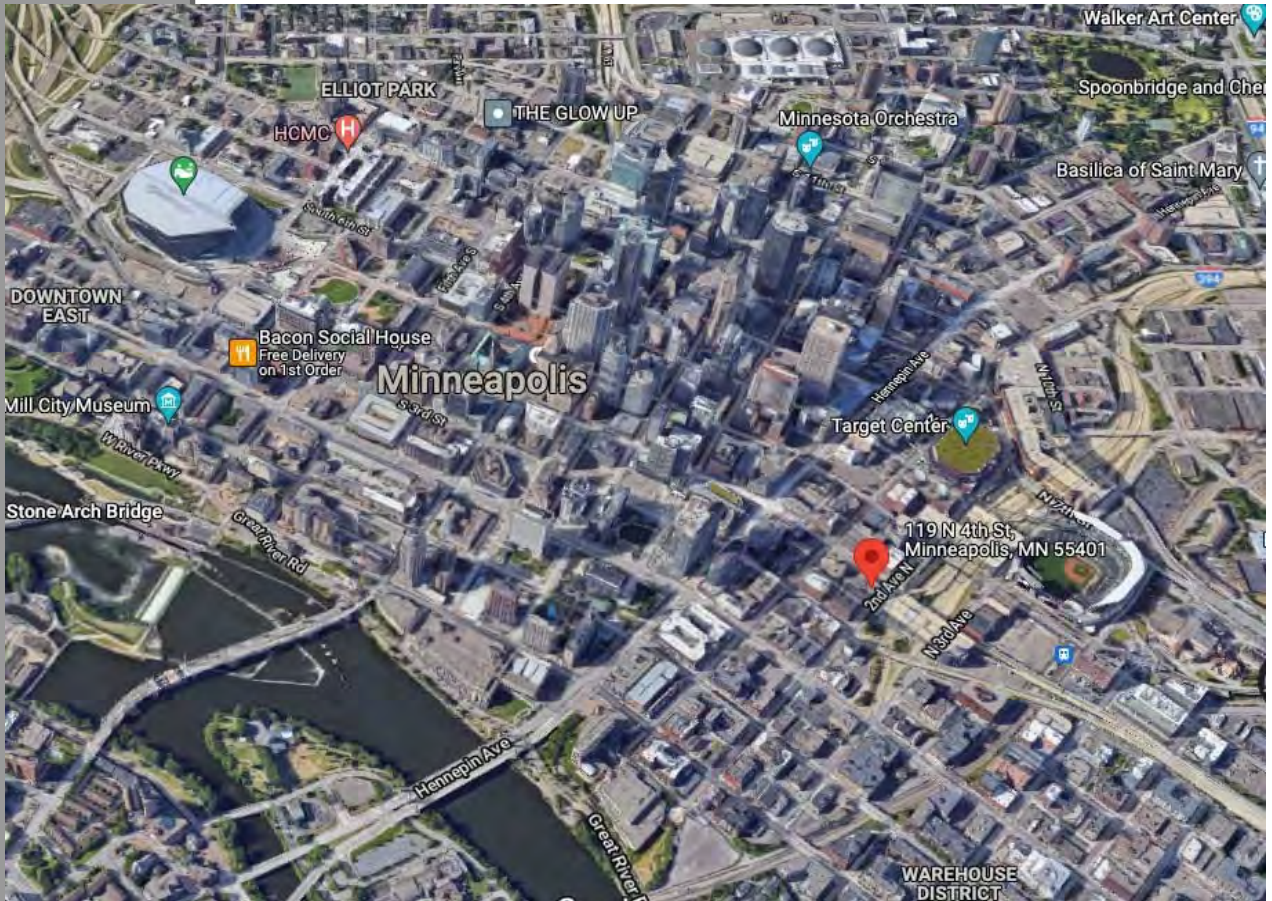
CRE Partners  
Broker  
612-730-4631  
eric@creminnesota.com

We obtained the information above from sources we believe to be reliable. However, we have not verified its accuracy and make no guarantee, warranty or representation about it. It is submitted subject to the possibility of errors, omissions, change of price, rental or other conditions, prior to sale, lease or financing, or withdrawal without notice. We include projections, opinions, assumptions or estimates for example only, and they may not represent current or future performance of the property. You and your tax and legal advisors should conduct your own investigation of the property.



# FOR SUBLEASE

Office Space @ The Textile Building



## CONTACT:

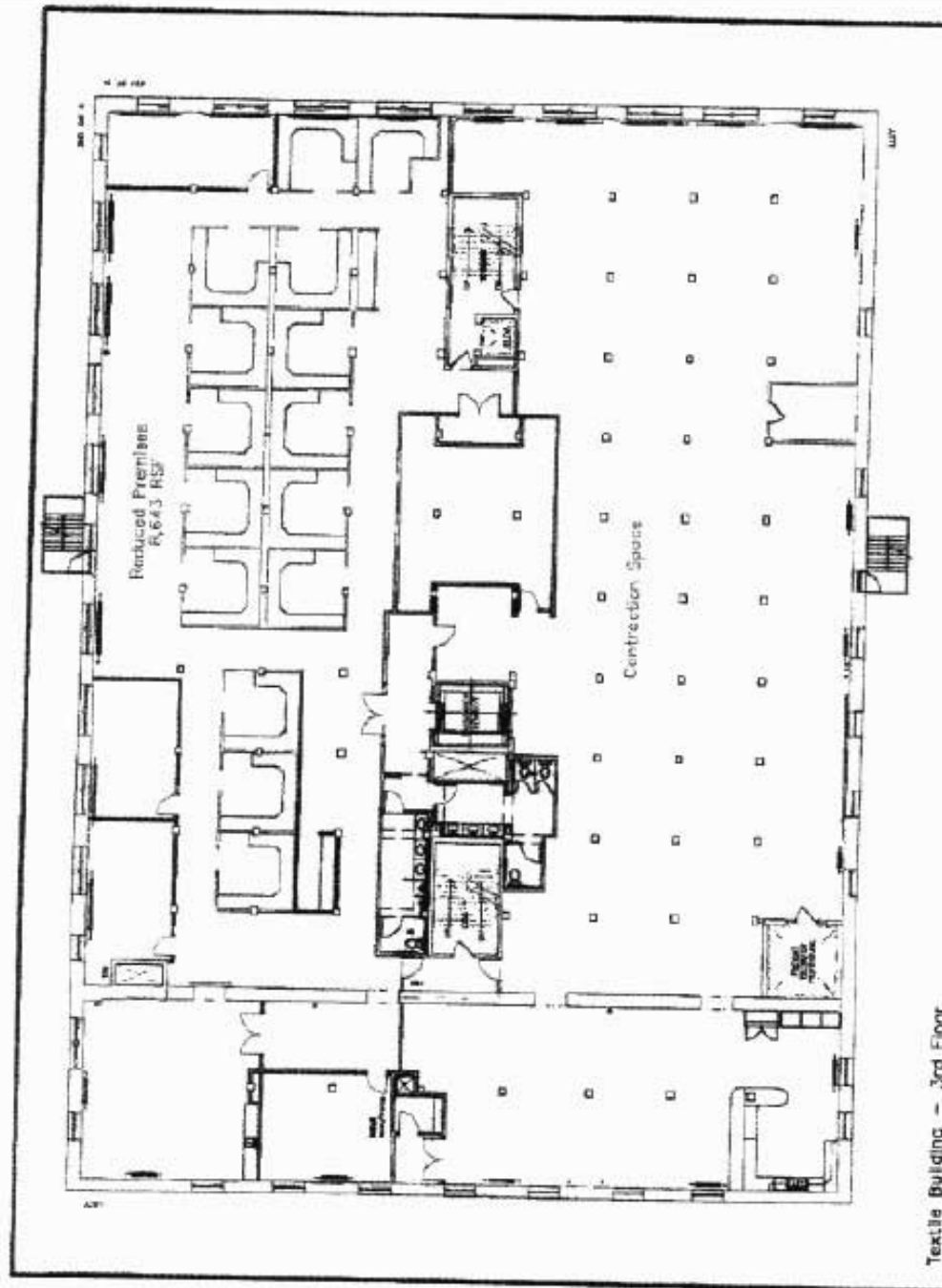
**Eric Riemer**

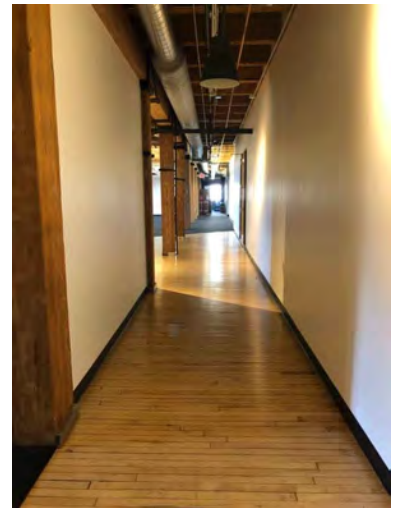
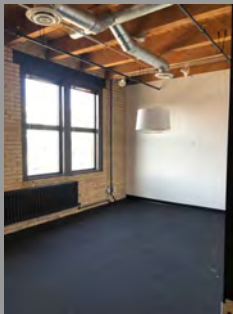
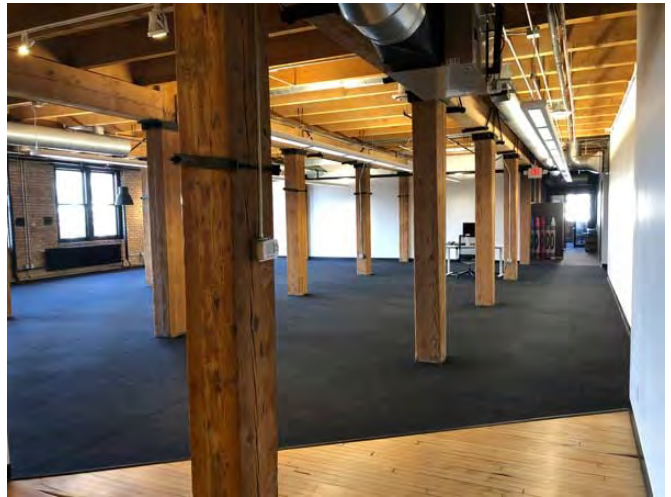
CRE Partners

Broker

612-730-4631

[eric@creminnesota.com](mailto:eric@creminnesota.com)





MORE INFO: [119 4TH ST N, MINNEAPOLIS](#) OR [MINNEAPOLIS OFFICE SPACE](#)